

CR2016

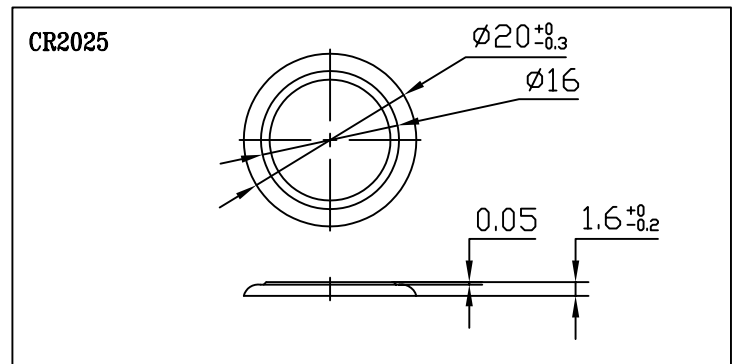
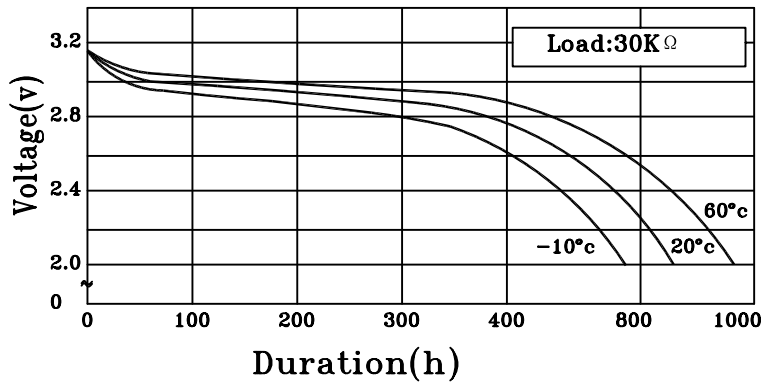


Lithium coin cell (Data Sheet)

Specification

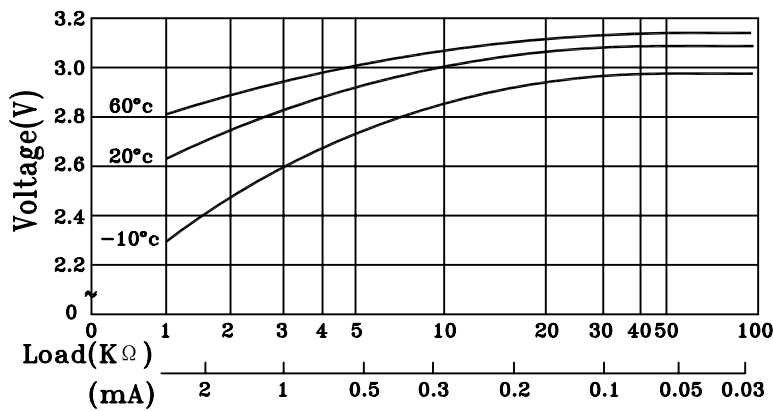
Model	CR2016
Nominal voltage	3.0(V)
Nominal capacity	70(mAh)
Standard discharge current	0.1(mA)
Maximum recommended current unde continuous discharge	2.0(mA)
Maximum recommended current unde pulse discharge	8(mA)
Operational temperature range	-20~60(°C)
Nominal weight	1.7(g)

Temperature Characteristics

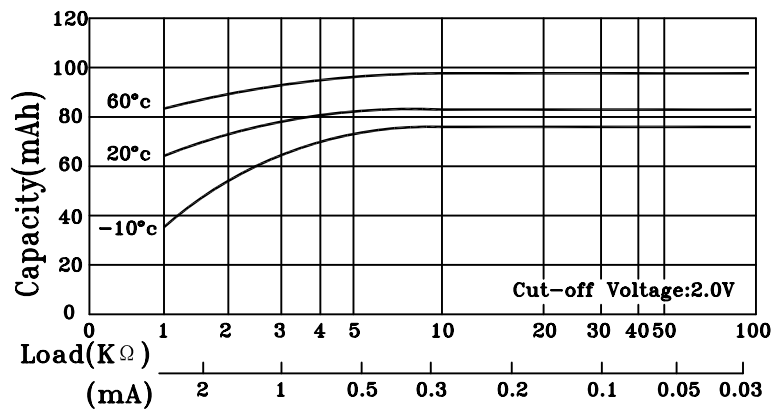


Untagged Battery Dimensions

Operating voltage vs. load resistance (voltage at 50% discharge depth)



Capacity vs. load resistance



Main Features

- Light Weight, High Voltage and High Energy Density
- Excellent Stable Discharge Characteristics and outstanding Temperature Characteristics
- Outstanding Temperature Characteristics
- Excellent Leakage Resistance and excellent Long-term Reliability